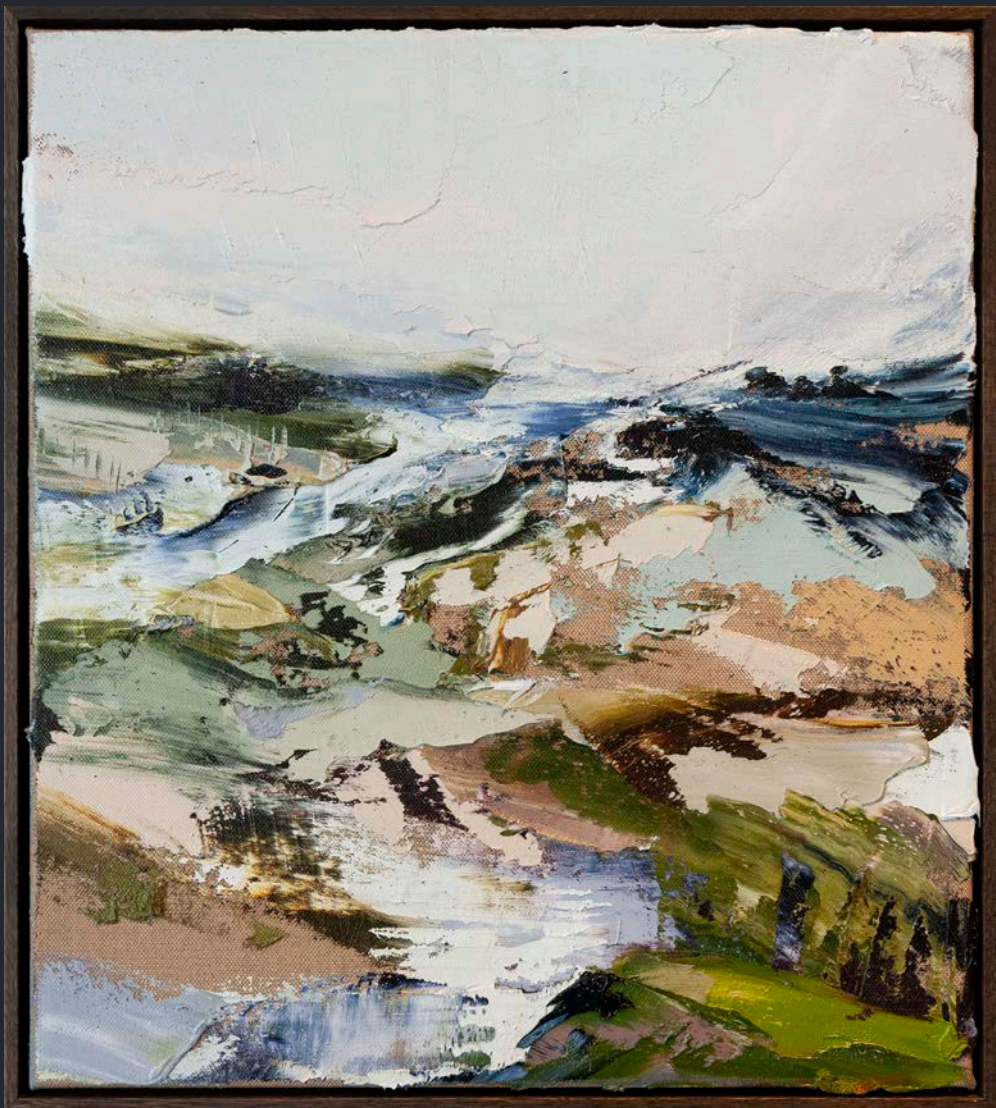


I


nanda\hobbs

AARON
KINNANE

NEW WORKS



NOVEMBER, 2019



Based in rural northern New South Wales, Kinnane is one of Australia's most dynamic and beautiful painters who often delves into sculptural mediums to expand the conceptual breadth of his practice. He has been widely acknowledged in collections throughout the region and has been a Wynne prize finalist amongst other coveted awards.

A restless explorer in the landscape, Kinnane is constantly searching for moments in his vision that allow him to morph the landscape from the representation of place, to a more meditative landscape of the mind. His practice is vital and visually dynamic—moving across the canvas in powerful swathes—playing with the viscosity of paint. The artist entices the audience to enter his world.

There is a sense of vastness to Kinnane's work. Even smaller studies have an epic quality; larger works full of awe. He uses the landscape—setting it as a metaphor for humanity with all our concerns and possibilities. Hope and beauty pervade throughout the picture plane with a palette that is restricted, yet, vibrant when required.

Kinnane is an artist who draws on the traditions of landscape oil painting but investigates beyond the experimental best of masters such as JMW Turner from the 1800's. Spiritually, there is a debt to the Chinese ink brush masters—the terraced Chinese landscape tradition; one that looks for order in the landscape thus creating a harmony—not only in composition but ideally, in the physical world—for the viewer.

A major exhibition is planned in August 2020 at Nanda\Hobbs.





AUTUMN BACK ROADS I

2019

Oil on linen

56.6 x 50.7cm (framed size)



AUTUMN BACK ROADS III

2019
Oil on linen
56.6 x 50.7cm (framed size)



AUTUMN BACK ROADS IV

2019

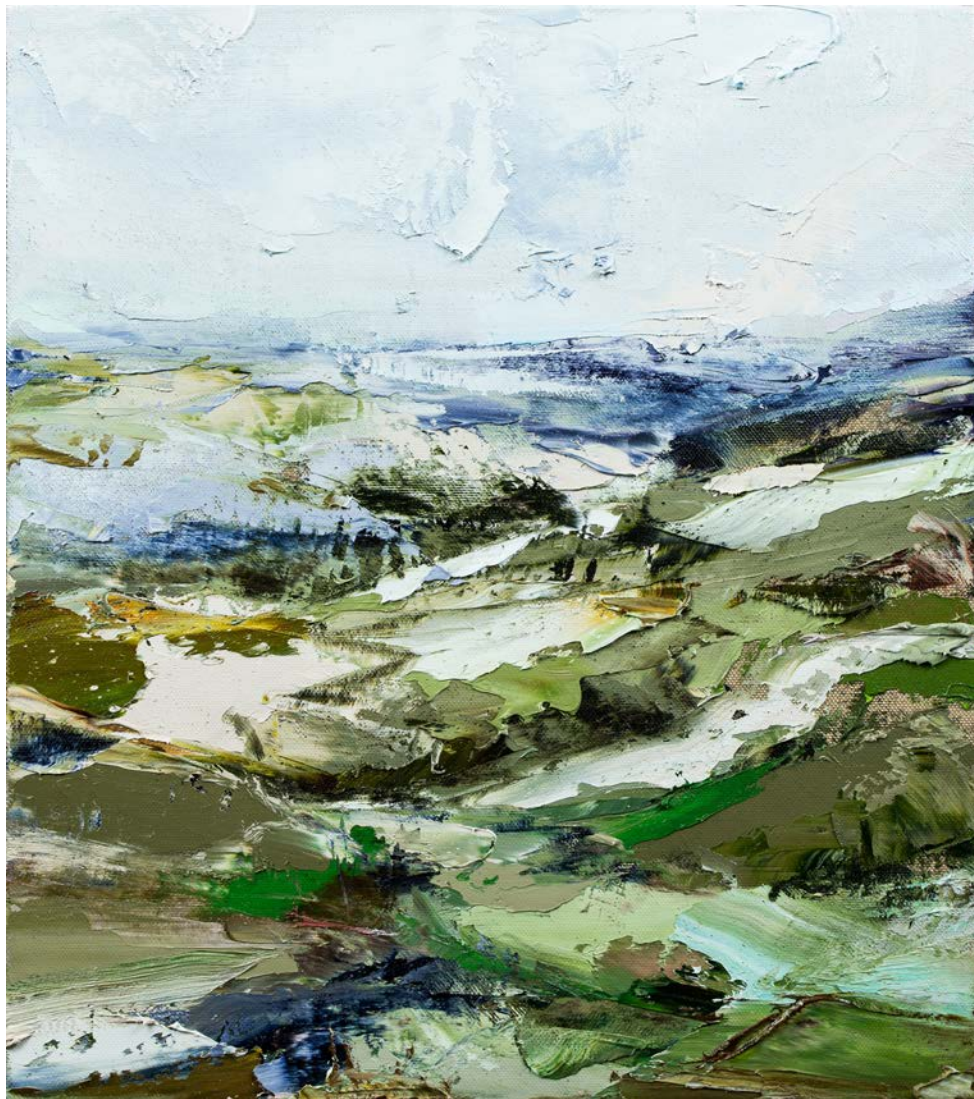
Oil on linen

56.6 x 50.7cm (framed size)



AUTUMN BACK ROADS V

2019
Oil on linen
56.6 x 50.7cm (framed size)

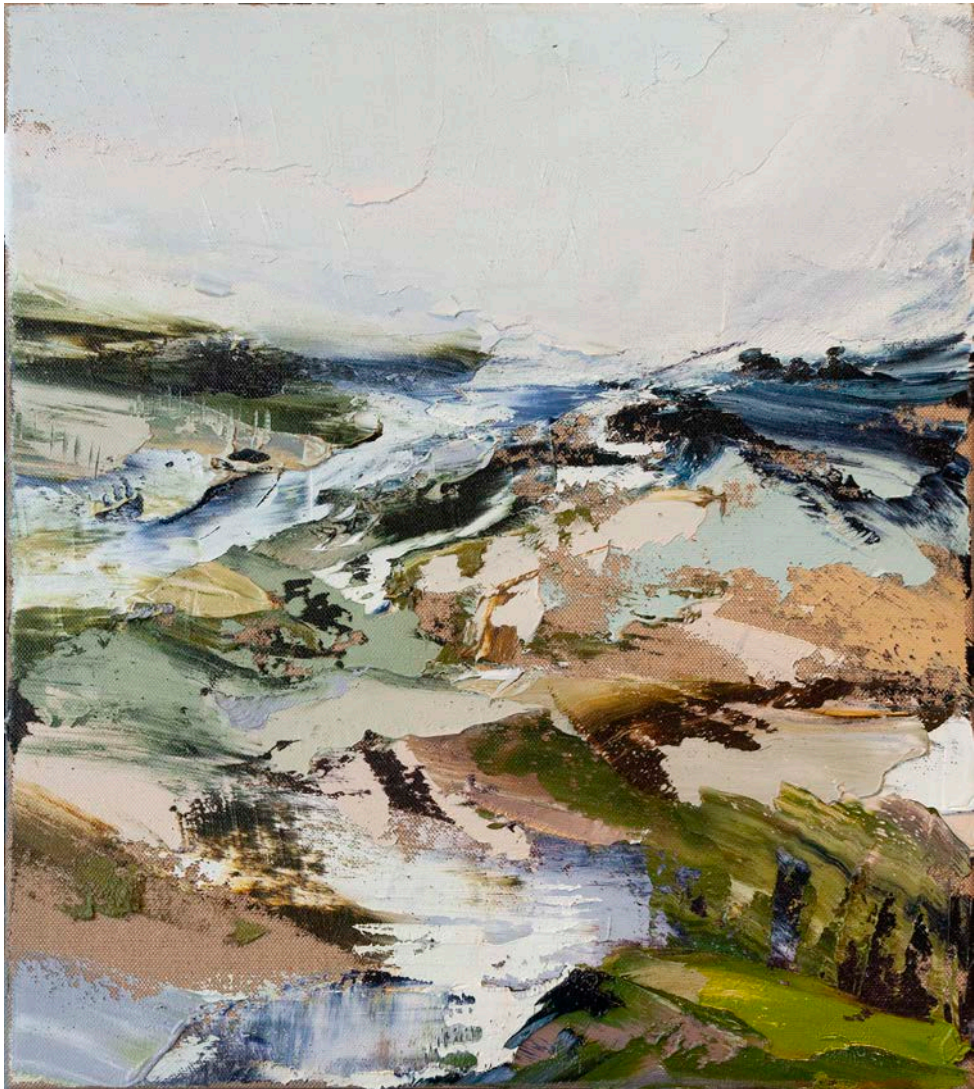


AUTUMN BACK ROADS VI

2019

Oil on linen

56.6 x 50.7cm (framed size)



AUTUMN BACK ROADS VII

2019

Oil on linen

56.6 x 50.7cm (framed size)



MORNING CLOSES IN AND CLEAR CLEAN XIV

2019
Oil on linen
56.6 x 50.7cm (framed size)



WALLABY TRACKS TO MOONAN FLAT I

2019
Oil on linen
160 x 120cm (unframed size)



WALLABY TRACKS TO MOONAN FLAT II

2019
Oil on linen
160 x 120cm (unframed size)



BLACK WALLABY I

2019

Oil on linen

160 x 120cm (unframed size)



BLACK WALLABY II

2019

Oil on linen

160 x 120cm (unframed size)



WALLABY TRACK TO MOONAN FLAT

2019
Oil on linen
182.7 x 162.6cm (framed size)

AARON KINNANE

Artist's CV



12-14 Meagher Street
Chippendale \ Sydney

#nandahobbs
nandahobbs.com
info@nandahobbs.com

n\h